



Google Map PIN : G9WR+48 Hyderabad, Telangana

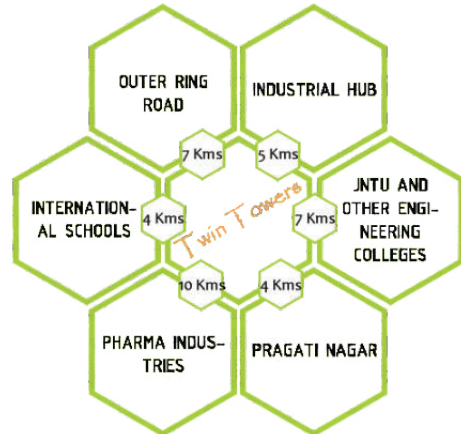
NOTE: This brochure is only a conceptual presentation and not a legal offering. the promoters reserve the right to alter and make changes in elevation, highlights, plan and specifications as deemed fit.

### Project Highlights

- Twin Towers
- Three Side Roads
- Covered Car Parking
- Housing Loan Facility available from leading financial Institutions (SBI, HDFC, ICICI)
- Stilt + Five Floors
- Large Open Spaces
- Rain Water Harvesting Pit
- No Common Walls
- Vaastu Compliant
- 8 Passenger Lifts

### Specifications

1. Structure : RCC Framed Structure.
2. Walls : Exterior & Interior Walls are with Karimnagar Red Bricks.
3. Doors : All the Door Frames are of Teak Wood.  
Main Door: Engineered Door  
All internal doors: Flush Doors
4. Windows : UPVC Windows.
5. Floorings: Good Quality Vitrified Tiles
6. Kitchen: Open Kitchen with Dado above the Cooking Platform
7. Toilets : Ceramic Tile Flooring; dado upto Lintel Level, Sanitary Ware and CP Fittings. Provision for Geysers and Exhaust Fans.
8. Electrical : Concealed Copper Wire of ISI Standard in PVC Conduits. 3-Phase Supply with MCBs in each Flat.
9. Water Supply : Under ground sump, over head tank and borewell water.
10. 2Lifts: 'SCHINDLERS' Brand Automatic Lifts of 8 Persons capacity
11. CCTV Provision in Common Areas.



### SRIJA INFRA DEVELOPERS

Site Address : Plot No. C-62 to C-65,  
Sy. No. 446, DPS Rd, Simhapuri Colony,  
Bowrampet, Hyderabad, Telangana - 500043.  
Ph : 96185 24447, 99590 59429  
E-mail : niranjan@srijadevelopers.in

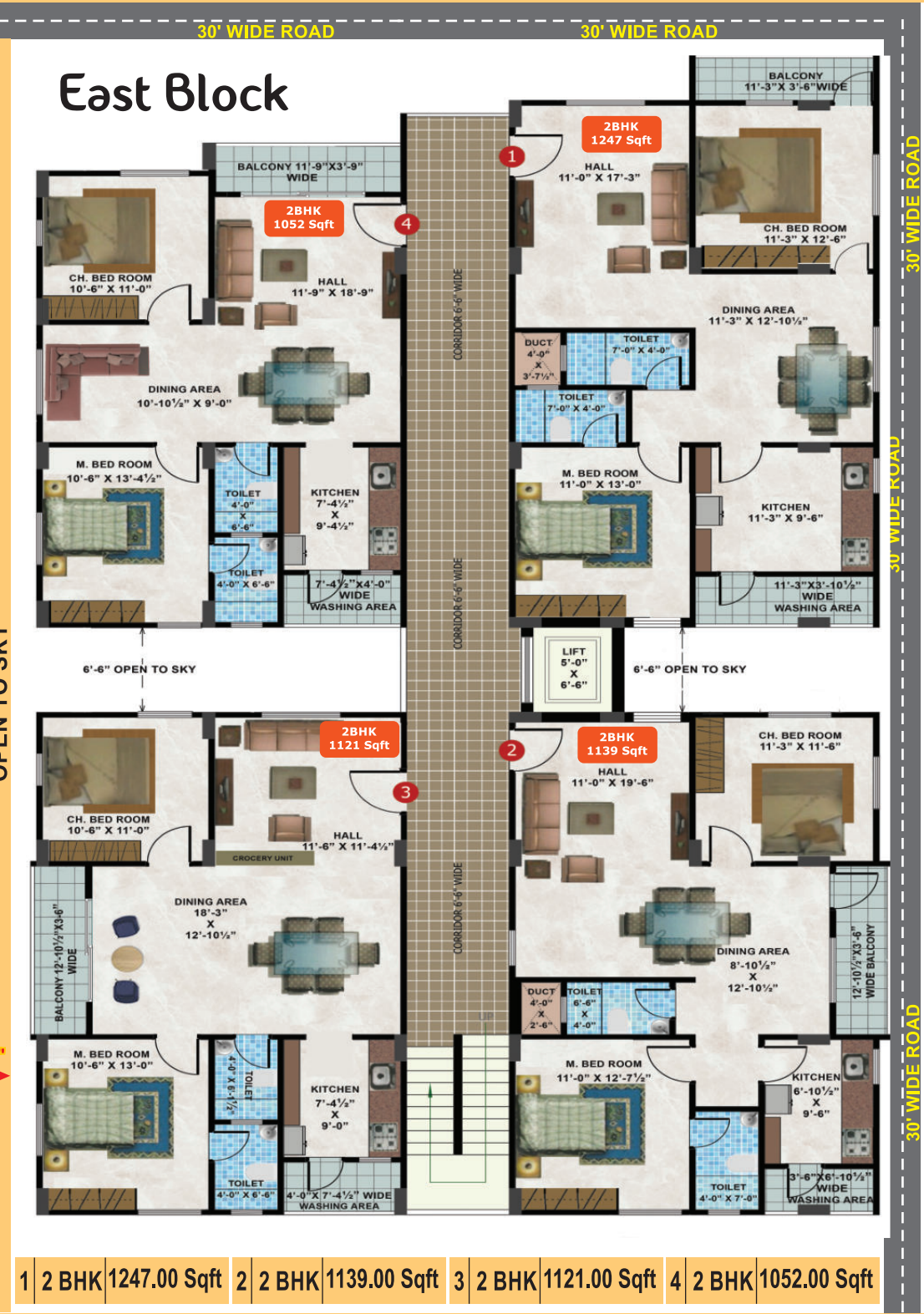


# Twin Towers

...for a blissfull living, choose Twin Towers

RERA: P02200003638 & P02200003801





## Amenities

- One Covered Car Parking of normal size to accommodate the Motor Cars up to Midsize Sedans.
- Two 'Schindler' Brand Automatic Lifts of 8 Passengers capacity.
- Power Back-up (DG Set) for all Common Areas, Corridors, Lifts, One Light and One Fan in all hall and bed rooms, kitchen and toilets and one Plug Socket Point in Hall to meet the WiFi Router Point and a Computer/LAPTOP charging Point for the WFH (Work From Home) needs.
- Solar Fencing on the compound wall.
- Individual Water Meters for all the Flats.
- Intercom Phone System.
- Large open areas.